

# Company Profile 2026



## Core team



- Peter Elliott, CEO 
- Ian Bulley – Geology & Geophysics



- Madeleine Slatford – Intl BD, G&G



- Tobias Tonsing



- Peter Browning-Stamp



- Jon Ford – Intl BD, G&G



- Lauren Bond – G&G



- GIS team, geology, IT

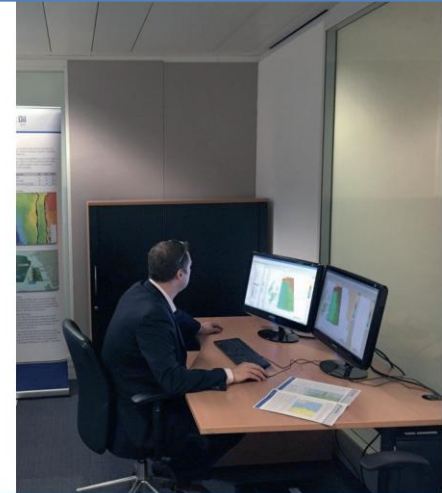
### Data Room

- Modern geophysical workstations
- Up to date geophysical software
- GIS and Office software
- Full IT and support staff
- Senior geophysical and geological staff

### Bid Rounds, A&D, Farm out

Host your data room with PVE Consulting

- Secure modern facilities
- Confidential environment with full user management and data tracking
- Professional presentation and data room team
- Promote data, assets, bid rounds and farm-in opportunities



*Physical Data Room*

*Virtual Data Room*



**London office (Central London)**

**Houston (San Felipe)**

**Cape Town**

**Data Rooms**



# Current and Recent Mandates



Office of the President

## PDSL

Data room, promotion and marketing for Petroleum Directorate Sierra Leone



MILTON CAPITAL PLC

## Milton Capital

Advisory, Business Development and new ventures mandates



## Ministry DRC

Bid Round promotion, Roadshow and data rooms for D. Rep Congo Ministry



## Global Petroleum

Namibia Farm-out and data room management



## FA Oil

Prospectivity Study Data Room Sierra Leone



## Zambezi Expln

Namibia Orange Basin Farm-out and data room management



Prospek Oil & Gas  
Advisory, Business Development  
Exploration campaign support



Oando  
Advisory, Business Development and farm out mandates



Heritage Oil  
OSWT Ghana Farm-out



Supernova Energy  
Farm out, Block 7B Guinea Bissau



Elephant Oil  
Advisory, Business Development  
Exploration campaign support



Blue Star Exploration  
Farm out, OSWT Ghana



Genel Energy  
Lagzira, Morocco Farm-out



Delonex Energy  
Farm out, Blk 12A, Kenya


- Geology
- Geophysics
- Basin Modelling
- Structural Geology
- Petrophysics
- Petroleum Geology and Prospectivity Studies
- Prospects, volumes and risking
- AVA, AVO and QI
- Reservoir Modelling
- Field development planning

- Asset management
- Exploration Campaign management
- Government, Compliance and Reporting
- Commercial studies
- Economic modelling
- Petroleum Agreements and Concessions
- Production Sharing Agreements and Contracts
- Commercial, legal and financial advisory
- Investor Relations
- Development and Production planning
- ESG
- Financing, markets and fundraising

- Experience -from 10 to 50 years experience per person in the oil and gas industry
- The team members have an understanding of exploration and development principles, garnered from several countries and jurisdictions
- Major oil company experience, from exploration through to development
- Major service company experience
- Start-up and growth in many small E&P companies over 3 decades

- Training
- Advisory
- Skills transfer
- Local content
- Technical skills
- Software training
- Digital skills and data management
- Oil, gas and energy prospecting

## Sierra Leone




**PETROLEUM DIRECTORATE SIERRA LEONE**

**SIERRA LEONE  
GEOTECHNICAL  
DATA EVALUATION**

**DATA ROOM RULES**


**LONDON DATA ROOM**



F&P UPSTREAM BUSINESS DEVELOPMENT

17 Hanover Street



**PETROLEUM  
20 Mandalay Street**



**Legend**

- 2D Seismic Data
- 3D Seismic Data
- 2D Seismic Data - 2011

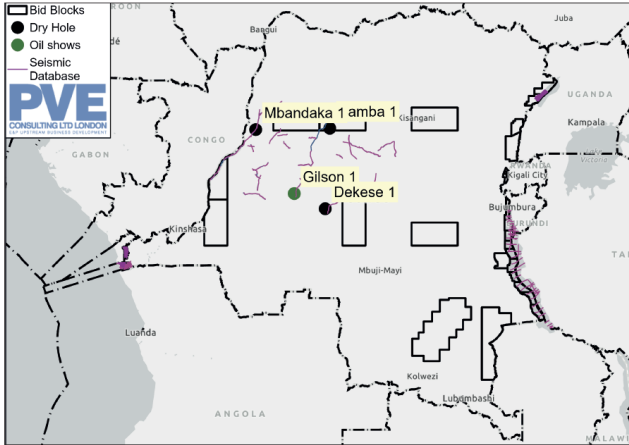
## DRC

**DEMOCRATIC  
REPUBLIC OF CONGO**

2022 Bid Round


### Democratic Republic of Congo Well & Seismic Database



**Legend**

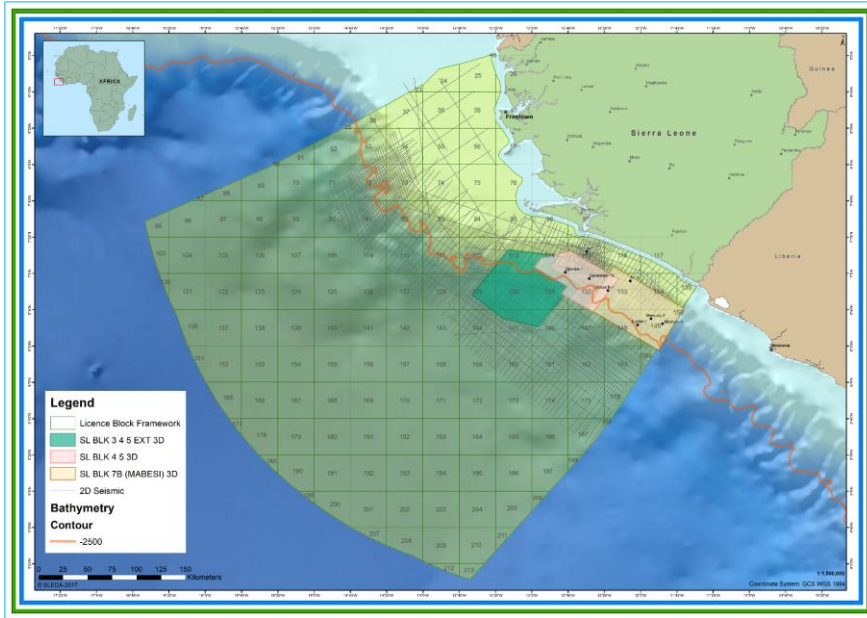
- Bid Blocks
- Dry Hole
- Oil shows
- Seismic Database

Region	Seismic Km	Wells
Cuvette Centrale Basin	2,334	4
Coastal Basin	2,886	-
Lake Tanganyika Basin	1,628	-
Albertine Basin	941	-



For further information contact:  
peter.elliott@pveconsulting.co.uk  
+44 (0)7971 073 198

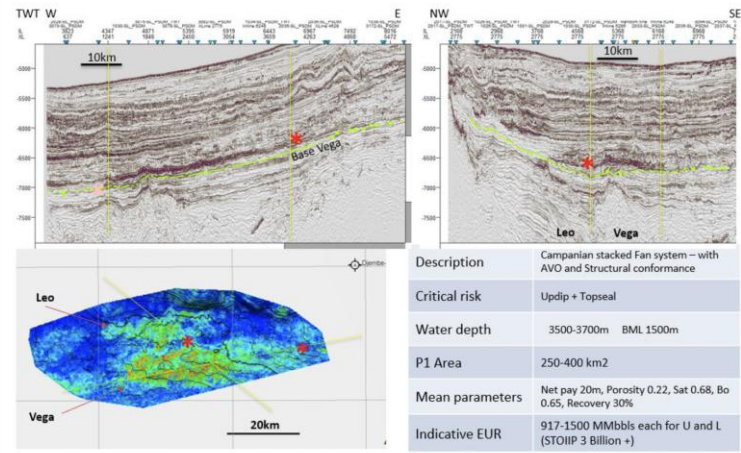
[WWW.PVECONSULTING.CO.UK](http://WWW.PVECONSULTING.CO.UK)



Entire 2D / 3D data room on behalf of PDSL

## Example Lead Montage

### Lead C-70-1: Campanian - Vega



2025 Comprehensive Sierra Leone prospectivity study with over 80 leads and prospects mapped on 2D and 3D

# Farm Out Campaigns – W Africa

## Offshore Ghana Early Production Opportunity Offshore Southwest Tano, Deepwater Tano Basin



Significant appraisal opportunity, with potential for rapid early production via existing infrastructure

Heritage Oil and Blue Star Exploration offer the opportunity to share well, testing a downdip extension of the Jubilee oil field targeting volumes with a GCoS of at least 80% in the primary ob

- The Offshore Southwest Tano (OSWT) Licence lies within a prolific, world-class petroleum system between the giant TEN and Jubilee Fields offshore Ghana.
- 2.1 Bnbbls STOIPP ( $P_{mean}$ ) identified across 3 prospects and 1 lead in multiple Turonian and Cenomanian targets proven in nearby discoveries.
- Two drill-ready prospects have been identified: Mansonia, a low-risk appraisal of a Jubilee field extension with a secondary play-opening deeper target, and Edinam, a high-impact, multi-target exploration opportunity.
- The Mansonia well targets ~ 98 mmbbls STOIPP ( $P_{mean}$ ) in the producing Lower Mahogany reservoir, with an additional 185 mmbbls in the deeper unpenetrated Mahogany Ultra Deep reservoir target.



The Partnership plans to drill the Mansonia well first establishing accelerate project development and further exploration

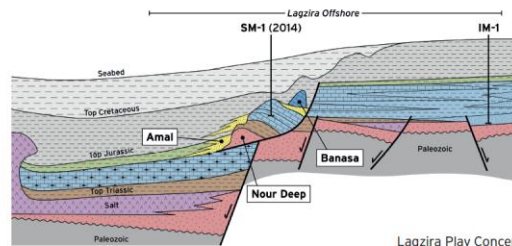


September 2022



Exciting Opportunity to participate in a new exploration permit offshore Morocco.

- Large licence covering 5,222 Km<sup>2</sup>, with water depths ranging 200-1,200m
- Petroleum system proven by SM-1 well (2014)
- 2x 2018 MAZ Broadband PSDM seismic over majority of licence
- 2018 seismic data reveals new plays not imaged in older seismic vintage
- Up to 850 MMbbls mean recoverable oil in single prospect, significant follow-on potential
- Initial period commitment seismic reprocessing only
- Single well commitment in first extension period (current schedule 2025)



Lagzira Play Concept

www.genelenergy.com

www.pveconsulting.co.uk

## Guinea Bissau Blocks 7B and 7C: Farm-In Opportunity



## 2022 Opportunity Summary

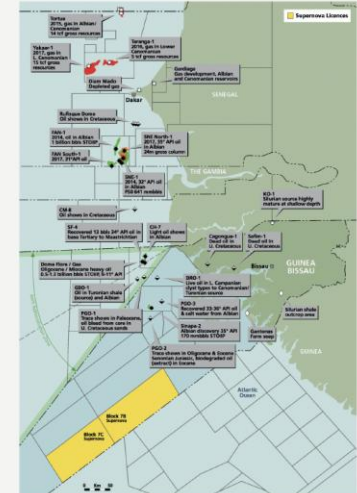
### Introduction

Supernova Energy B.V. holds a 90% Working interest in the Garoupa Licence in Guinea-Bissau (Block 7B) and 90% WI in the Cor Cor Licence (Block 7C). The remaining 10% is held by Petroguin, Guinea-Bissau's state oil company.

Supernova is seeking a farm-in partner(s) to pursue the exploration campaign on both blocks. Block 7B is currently in the seismic phase until October 2024. Block 7C is currently within the initial 2D seismic phase until October 2024.

Blocks 7B (8,736 km<sup>2</sup>) and 7C (7,136 km<sup>2</sup>) lie within an area of great exploration success in West Africa, and within a conjugate trend of the successful Guyana and Suriname basins. To the north in Senegal Cairn is finalising development plans for the FAN and SNE oil discoveries and Kosmos and BP have announced vast gas reserves in the Cretaceous deepwater play. Guinea Bissau represents the southern extension of this prolific MSGBC-basin.

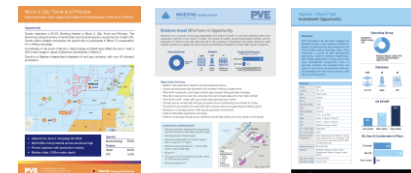
Several high-impact deepwater wells are due to be drilled nearby in 2023 and 2024, including the platform-edge Atum and Anchove prospects in Guinea Bissau (CNOOC, Svenska and FAR), and the Gainde well in AGC Profond (CNOOC and Impact).



Contact Peter Elliott for further information, project flyer and CA  
peter.elliott@pveconsulting.co.uk

Page 1

www.supernova-energy.com

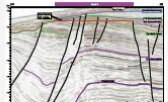
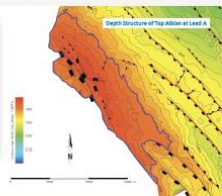




## GUINEA BISSAU BLOCKS 7B AND 7C FARM-IN OPPORTUNITY

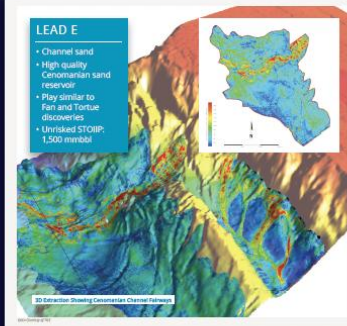
### LEAD A

- Subconformity/fault block trap
- Stacked Aptian sandstone reservoirs
- Platform margin play similar to SNE discovery
- Unrisked STOIP: 1,500 mmbbl



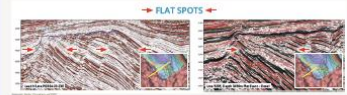
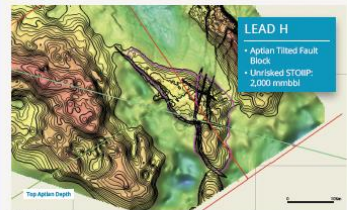
### LEAD E

- Channel sand
- High quality Cenomanian sand reservoir
- Play similar to Fin and Tortue discoveries
- Unrisked STOIP: 1,500 mmbbl



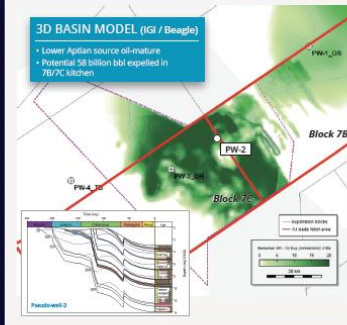
### LEAD H

- Aptian Tilted Fault Block
- Unrisked STOIP: 2,000 mmbbl



### 3D BASIN MODEL (Igi / Beagle)

- Lower Aptian source oil mature
- Potential 58 billion bbl expelled in 7B/7C kitchen



## GUINEA BISSAU BLOCKS 7B AND 7C FARM-IN OPPORTUNITY



**MSGBC BASIN  
CONJUGATE WITH  
DEMERARA HIGH  
GUYANA / SURINAME**

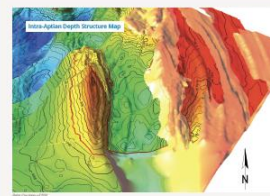
**MULTIPLE BILLION BBL +  
PROSPECTS**

**EXCELLENT FISCAL TERMS**

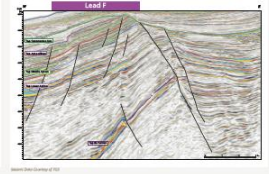
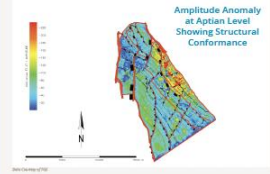
**IRR's > 25 %**

### LEAD F

- Large (25 x 4 km) well-defined four-way closure
- Stacked Aptian sandstone reservoirs
- Strong amplitude conformance at Intra-Aptian level
- Lower Aptian source

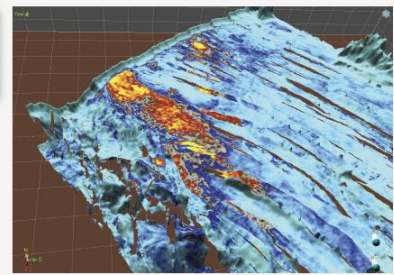


Mapped volumes	Unrisked STOIP mmbbl
Lead F - Mid-Aptian	2,500
Lead F - Lower Aptian	4,500



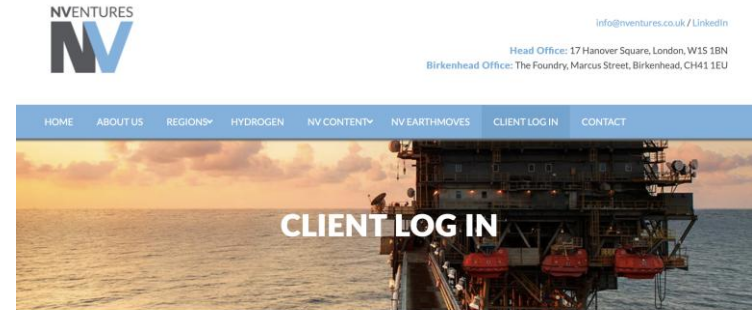
### LEAD A

- Paleosean display showing seismic sweetness attributes over Lead A, shelf edge prospect on Block 7B, with over 500 mmbbl rec.

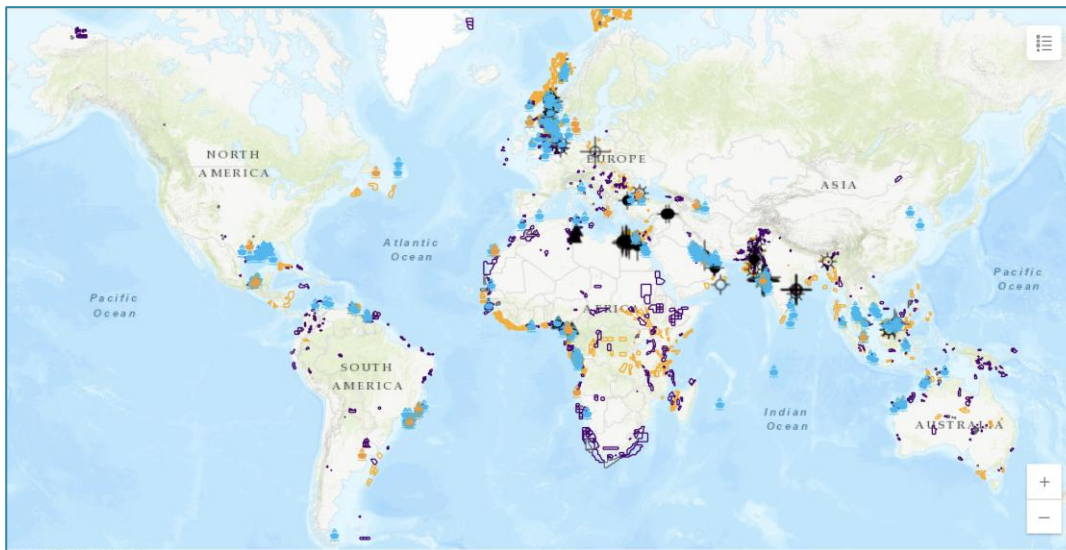


## – Scouting

- NVentures international scouting
- E&P activity
- Active data rooms
- Wells to watch / farm-in wells
- Bid rounds and open acreage
- Off-market asset screening



NVENTURES - CLIENT LOGIN



- Over 600 Wells to Watch
- Over 1000 Active Data Rounds
- Over 2000 bid round blocks
- Over 100 farm out
- All drilling and deals activity

# International Coverage



- Accurate, current and timely E&P intelligence for 6 different continental regions
- No breakdown into smaller sub-regions – cost saving, more value

# Data Room Facilities

- Central London (Mayfair)
- Houston (San Felipe)
- Flexible data room catering – 2 to 20 ppl

## Hardware

2x High end dual monitor workstations (geophysics)

PC Workstation

60" presentation screen

PVE wifi

## Team

Director and data room manager

G&G advisor, geophysicist (Ghana experience)

Data Room support staff

Technical and data management team (MSc qualified)

IT support

Building support staff (Regus)

## Software

S&P Kingdom (x2)

MS Office

ESRI ArcGIS

VCR (Teams, Zoom, TeamViewer etc)

Virtual live access to workstations

Virtual Data Room (Citix Sharefile, Digify, Sharepoint)

Adobe acrobat DC

Access to DUG Insight, Petrel and Seisware optional



The screenshot shows a webpage for PVE Data Room Services. The header features the PVE logo. Below it, the text reads 'PVE Data Room Services' and 'Secure, state of the art data room services in central London and Houston.' There are two icons: one for 'Data room support for farm out promotion, and A&O and M&A due diligence' and another for 'Data room services for government promotion of assets, acreage and bid rounds.' A 'Data Room' section lists features like modern geophysical workstations, up-to-date software, and full IT support. A 'Customer Testimonial' from TotalEnergies praises the PVE team's professionalism and regional knowledge. A 'Bid Rounds, A&O, Farm out' section describes the secure and professional environment. At the bottom, there is contact information for the London and Houston offices and a list of current clients including S&P Kingdom, Microsoft, and others.

# Global Reach – Buyer Universe

- **Scout meetings**

- MMEA, NWES, CEEC, AFME, LACAS, Dubai, Singapore etc

- **Conference and Exhibition**

- AOW, AEW, EGYPES, MOC, AAPG, IMAGE, EAGE, GESGB, PETEX, BEOS, AGPCE, Africa Energy Summit, World Energies Summit, WECA, WAES, NAPE, OTC, GasTech, ADIPEC, MSGBC, IPA

- **Regional E&P and investor groups**

- CGEF, GESGB, PESA, SEAPEX, HGS, SAOGA, NAPE, SPE, LPS, CEEC



- **Global Client Relationship Management (HubSpot)**



- Data Room Messaging
  - Strong partner
  - Proven oil
  - Data quality
  - Good fiscal terms
  - Established E&P environment
  - Rapid ROI
- Advertising and Marketing
  - Targeted E&P firms
  - Frontier players, commercially capable
  - Direct promotion
  - Scout group meetings, conferences and exhibitions
- Direct calls and company one to one meetings
- Follow up and bringing in new companies

## Contacts

---

### LONDON

**Peter ELLIOTT**

Mobile. +44 (0)7971 073 198

[peter.elliott@pveconsulting.co.uk](mailto:peter.elliott@pveconsulting.co.uk)

### LONDON

**Lauren Bond**

Mobile. +44 (0)7787 482 133

[lauren.bond@pveconsulting.co.uk](mailto:lauren.bond@pveconsulting.co.uk)

17 Hanover Square

London

W1S 1BN

[www.PVEConsulting.co.uk](http://www.PVEConsulting.co.uk)